

Guide to Pro PC Secure

- 1) **SUMMARY**
- 2) **BASIC INSTRUCTIONS**
- 3) **CONFIGURATION**
- 4) **ADDITIONAL INSTRUCTIONS**

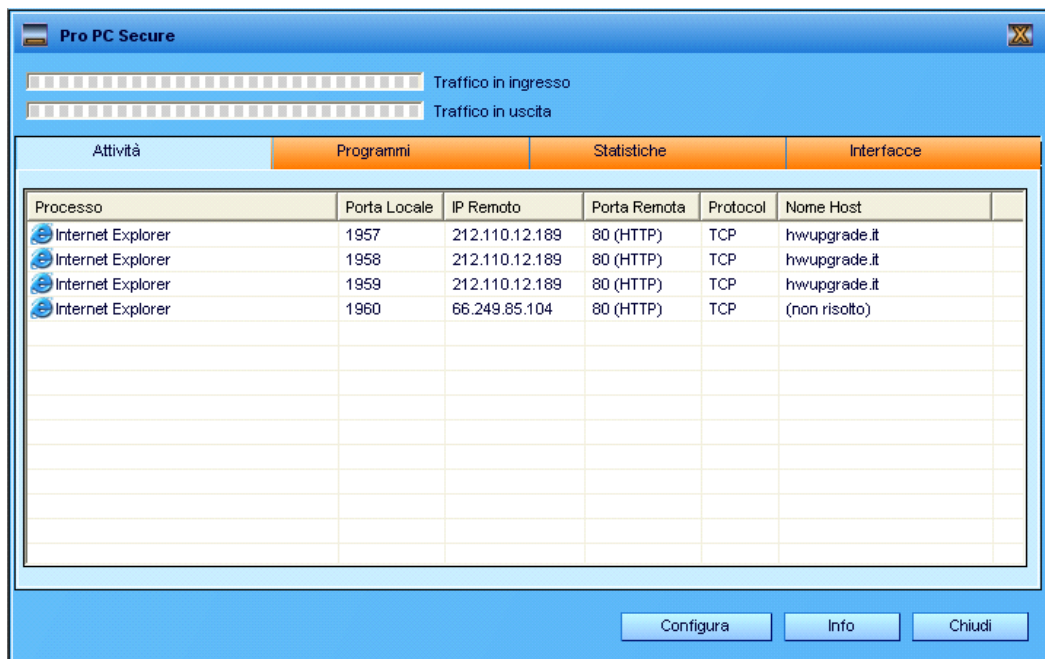
1) SUMMARY

Pro PC Secure is a programme used to protect users from attacks coming from the web (better known as a Firewall). Users who wish a greater protection level for their PC against DoS (Denial of Service) attacks for example will find this programme particularly useful. Pro PC Secure is a very easy to use software product.

This small guide is useful to uncover all functions and will accompany the user step by step through all software sections.

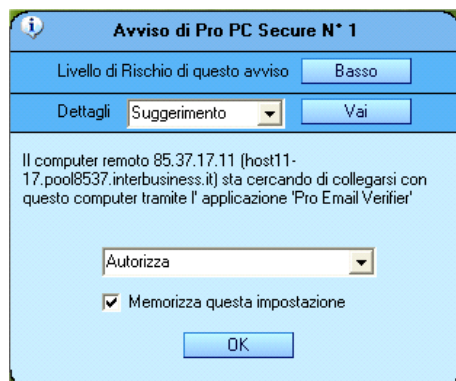
2) BASIC INSTRUCTIONS

Once the programme is installed and having clicked on the appropriate icon, a window similar to the one following will appear:



This display shows processes and traffic generated by Internet. Using this information, it is possible to monitor in real time all data flow entering and leaving all network interfaces (modem, network cards) installed on you PC.

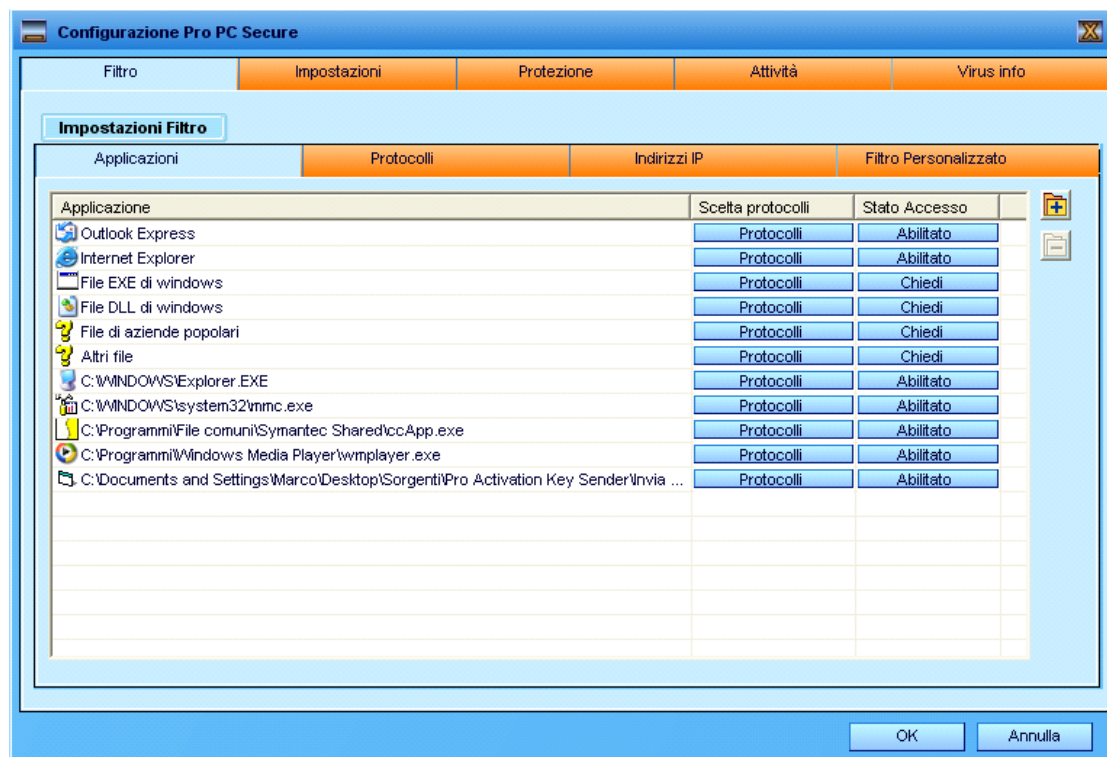
When the programme is operating, a warning window like the one following may appear:



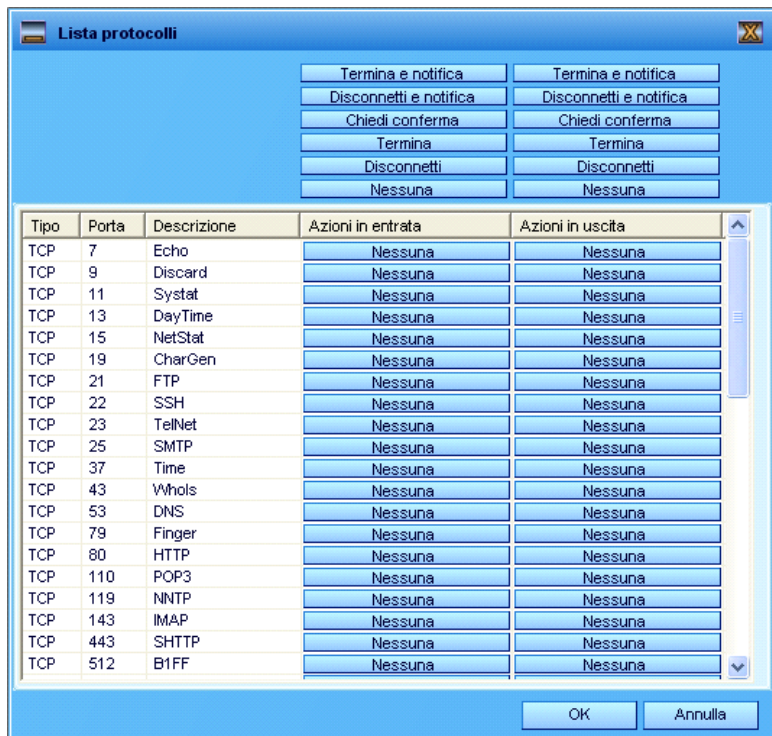
This window allows the user to authorize or not a connection requested to another computer. Pressing the OK button, the request will be authorized. As an alternative, it is possible to select between 5 different actions: 'Authorize', 'Disconnect', 'Disconnect and notify', 'Terminate' and 'Terminate and notify'. Selecting the option 'Memorize this setting', the programme will always carry out this specified action each time a connection request is made by the same remote computer.

3) CONFIGURATION

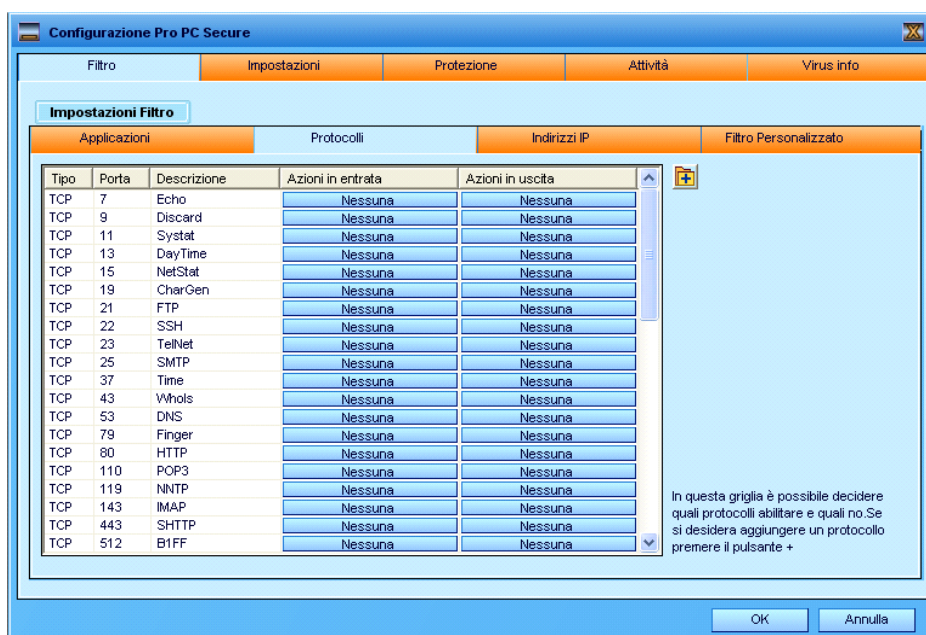
To configure the programme, press the 'Configure' button situated at the lower left of the 'Info' key.



Using this window, it is possible to configure the programme so it is compatible with the needs of the user. In the 'Applications' card it is possible to enable or disable an application or a category of applications. To do this, press on the button situated in the column 'Access state' corresponding to the application or type of application desired. The actions are 'Enabled', 'Deactivated', and 'Ask'. More experienced users can alternatively press the protocols button, which will display the following window:

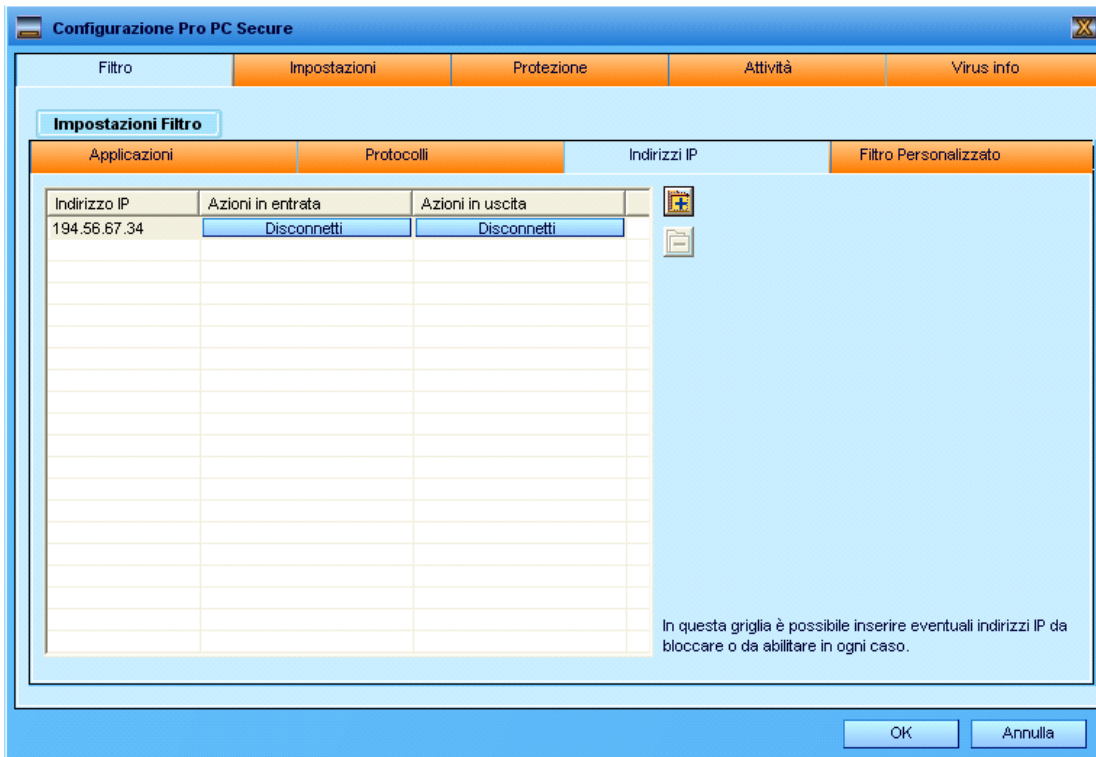


At this point it is possible to configure each single input or output port for an application, choosing from 6 different actions: 'None', 'Disconnect', 'Disconnect and notify', 'Terminate', 'Terminate and notify'. Returning to the 'Pro PC Secure Configuration' window and selecting the 'Protocols' card, a window similar to the previous window is shown referring to all applications and all connections:

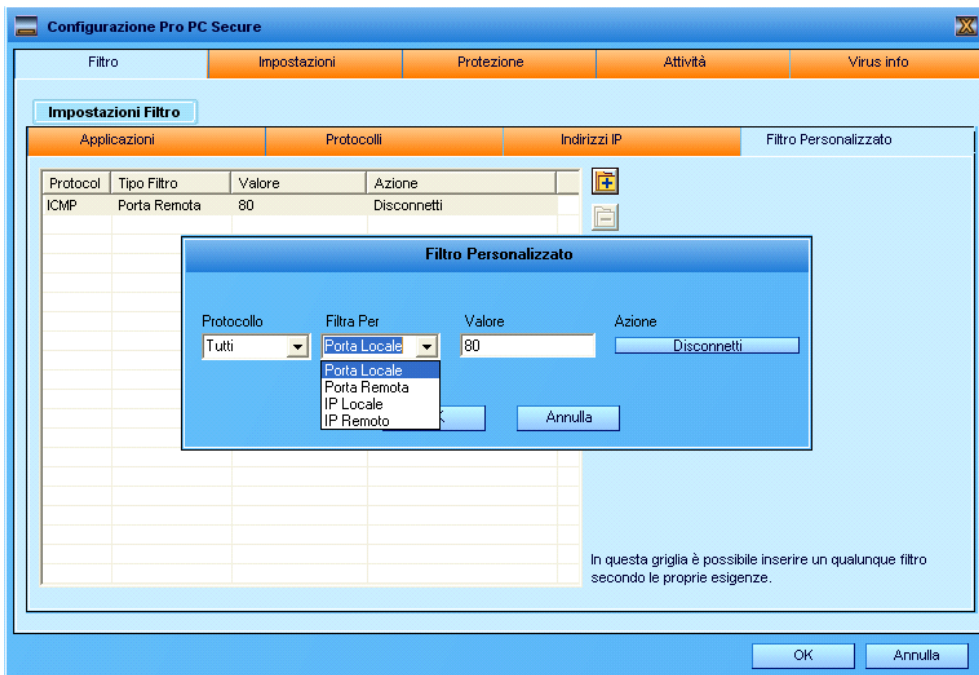


This window functions in a similar way to the previous window. In addition it is possible to insert other ports and protocols by selecting the '+' button.

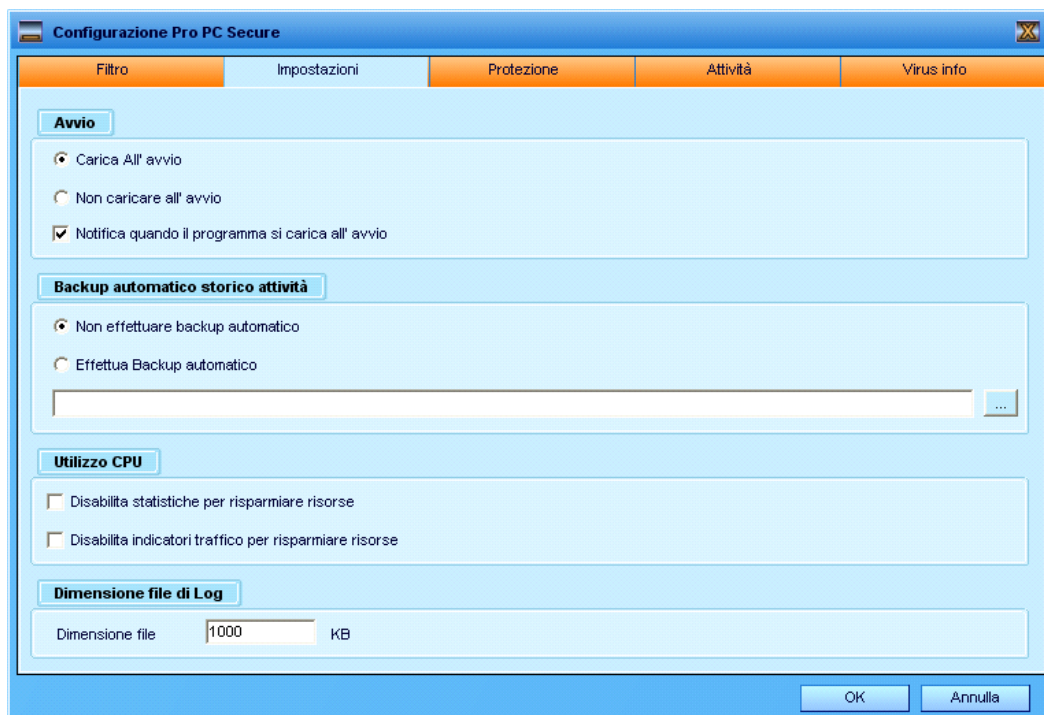
The next window allows the user to filter one or more IP addresses by pressing the '+' button:



The 'Customized Filter' card can be used as an alternative or to substitute the filter windows illustrated previously. Also in this case to add a filter press the '+' key .

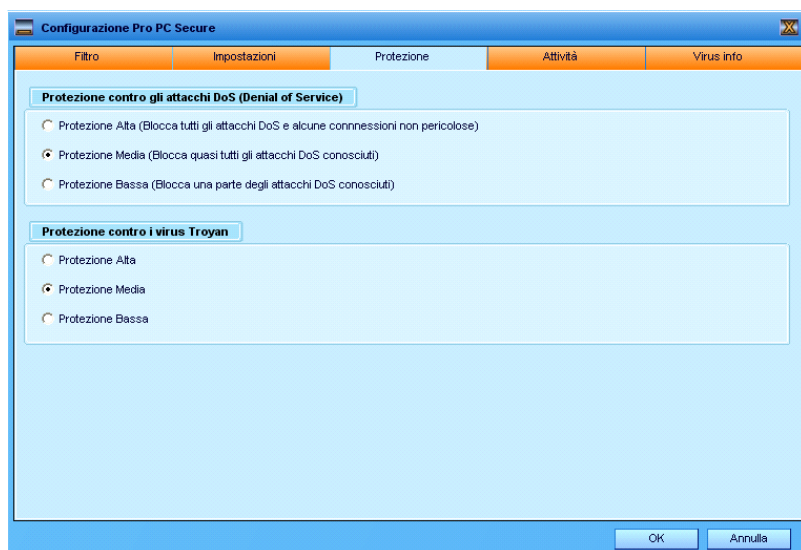


Clicking on the 'Settings' card, a similar window to the one below is displayed:



These settings do not refer to the protection level of the programme, but they can be useful: The 'Start' tab allows the user to specify that the programme must be loaded automatically at start-up. The Backup tab allows the user to specify a path that the programme will use to perform a copy of the activities monitored inside the 'Activity' card. The 'CPU Usage' tab allows system resource savings by selecting the desired boxes.

The 'Log file dimension' tab allows the user to set the maximum dimension of each activity file (activity card). The less this number the more the files that the programme will be able to create and vice versa. The 'Protection' card shows a window similar to the next window:



The 'Protection against DoS attacks' tab, allows the user to configure a level of protection against attacks coming from other computers. Increasing the protection level, the computer will be better protected from hypothetical external attacks, but it may also lock out some non-dangerous connections. On the contrary, reducing the protection level, the computer will lock out fewer attacks and hence diminish the risk of locked out connections. The 'Protection against Trojan viruses' tab is similar to the previous tab and

enables protection for the computer against Trojan viruses. The more the protection level is higher, more will be the input ports thought to be dangerous locked out by the programme as the ports can be accessed together by several Trojan viruses.

The next window displays the warnings Log that the programme displays when a new connection is established:

Data	Rischio	Processo / Nome File	Direzione	Prot	Porta Locale	IP Locale	Porta Remota
25/05/2005 15.37.29	Alto	-	Entrata	UDP	1345	82.55.147.227	53
25/05/2005 17.05.08	Alto	-	Entrata	UDP	1041	82.53.85.223	53
25/05/2005 17.15.44	Basso	Common Client User Session - C:\Pro...	Uscita	TCP	1402	82.51.83.123	110
25/05/2005 17.15.47	Basso	Common Client User Session - C:\Pro...	Uscita	TCP	1402	82.51.83.123	110
25/05/2005 17.15.57	Basso	Pro Activation Key Sender - C:\Docu...	Uscita	TCP	1413	82.51.83.123	2433
25/05/2005 17.16.00	Basso	Pro Activation Key Sender - C:\Docu...	Uscita	TCP	1413	82.51.83.123	2433
25/05/2005 20.27.26	Medio	Prosoftware - C:\Documents and Set...	Uscita	UDP	1188	192.168.0.1	4559
25/05/2005 20.27.29	Medio	Prosoftware - C:\Documents and Set...	Uscita	UDP	1188	192.168.0.1	4559
25/05/2005 20.27.29	Medio	Prosoftware - C:\Documents and Set...	Uscita	UDP	1188	192.168.0.1	4559
25/05/2005 20.32.05	Alto	-	Entrata	ICMP	-	192.168.0.1	-
25/05/2005 22.06.57	Basso	Common Client User Session - C:\Pro...	Uscita	TCP	1047	82.51.74.183	110
25/05/2005 22.06.58	Basso	Common Client User Session - C:\Pro...	Uscita	TCP	1047	82.51.74.183	110
25/05/2005 22.19.29	Basso	Common Client User Session - C:\Pro...	Uscita	TCP	1042	82.55.145.166	110
25/05/2005 22.19.32	Basso	Common Client User Session - C:\Pro...	Uscita	TCP	1042	82.55.145.166	110
25/05/2005 23.19.30	Alto	-	Entrata	UDP	1039	82.55.145.92	53
26/05/2005 8.20.44	Basso	Pro Activation Key Sender - C:\Docu...	Uscita	TCP	1141	82.49.83.18	2433
26/05/2005 8.20.46	Basso	Pro Activation Key Sender - C:\Docu...	Uscita	TCP	1141	82.49.83.18	2433
26/05/2005 8.28.41	Basso	Esplora risorse - C:\WINDOWS\Explo...	Uscita	TCP	1195	82.49.83.18	4501
26/05/2005 8.28.45	Basso	Esplora risorse - C:\WINDOWS\Explo...	Uscita	TCP	1195	82.49.83.18	4501
26/05/2005 12.14.49	Basso	Pro Email Verifier - C:\Programmi\Pro ...	Entrata	UDP	1119	82.51.72.34	53
26/05/2005 12.14.54	Basso	Pro Email Verifier - C:\Programmi\Pro ...	Entrata	UDP	1119	82.51.72.34	53
26/05/2005 15.09.49	Basso	Common Client User Session - C:\Pro...	Uscita	TCP	1041	82.51.86.154	110
26/05/2005 15.09.52	Basso	Common Client User Session - C:\Pro...	Uscita	TCP	1041	82.51.86.154	110
26/05/2005 15.10.14	Basso	Esplora risorse - C:\WINDOWS\Explo...	Entrata	UDP	1060	82.51.86.154	53

Using this window, it is possible to maintain an archive of all connections established by the programme, after the user has given his consent to the connection.

4) ADDITIONAL INFORMATION

This programme is being continually updated and therefore it is possible that this document may not be updated at each software modification.

In some cases and for unknown causes, the programme is not compatible and unable to function with some types of Personal computer. If some malfunctions are found, please send an e-mail to this address: info@pro-software.it.